

# UNIS 2012 Fall New Products

***FUN Is UNIVERSAL!***

## **UNIVERSAL SPACE (CANADA)**

70 Esna Park Drive, Unit 5  
Markham, Ontario  
L3R 6E7 Canada  
Tel: +1 905 477 2823  
Fax: +1 905 477 2660  
sales@universal-space.com

## **UNIVERSAL SPACE (H.K.)**

Room 1813, Tsuenwan Industrial Center  
220-248 Texaco Rd.  
Tsuenwan, N.T. Hong Kong  
Tel: +852 24076810  
Fax: +852 24099572  
sales@universal-space.com.hk

## **SHIYU GROUP & UNIS TECHNOLOGY CO. LTD.**

Minke East Rd., Civil Science & Technology Park  
Dongming North Rd., Shiqi, Zhongshan,  
Guangdong, China Zip: 528402  
Tel: +86 760 2388 6688  
Fax: +86 760 2388 6689  
sales@zs-shiyu.com

[www.universal-space.com](http://www.universal-space.com)  
[www.zs-shiyu.com](http://www.zs-shiyu.com)



# UNIS 2012 Fall New Products

UNIS  
PRODUCTS  
2012-2013

# PIRATE'S HOOK

## REAL REEL FISHING ACTION!

- 2 player video fishing game!
- Fast-paced gameplay requires skill and timing
- Striking multi-color changing LED lights
- 42" LCD monitor



CHILDREN  
LOVE IT



EASY TO  
UNDERSTAND



FUN TO PLAY



Smart Card  
Capable








### Unique fishing reels

Unique fishing reels with rotating handles to wind the line. 3 different tension settings to enhance game play experience!  
Pull harder for BIG FISH!

### Catch the lobster, win the treasure!

The bigger the fish, the higher the score

## HOW TO PLAY

- Insert coin(s) to start
- Press the  button to lower the hook.
- Rotate the handle to reel in fish
- Catch as many fish as possible within the time limit.
- Junk Items = No Tickets.



- The bigger the fish, the higher the score.
- Catch the Lobster King to win the MEGA BONUS!



## SPECIFICATIONS

Rated Power Supply	Min. Power Consumption	Max. Power Consumption
AC220-240V 50/60Hz	210W	380W
Game Dimensions	Packing Dimensions	Container Fitting
W40 5/8xD33 1/2xH91 3/8(inch) W1030xD850xH2319mm	W45 1/4xD43 3/8xH88 5/8(inch) W1150xD1100xH2250 (mm)	20' container: 10 units 40' container: 22 units
Game Weight	Shipping Weight	Smart Card Capability
180kg/397lb	250kg/551lb	Yes



# WATERPARK ADVENTURE

**BLASTING**  
TO A NEW ADVENTURE

## An attractive new hi-tech water game

- Cutting edge water sensor technology
- Attractive multi-colored LED lights
- 1 to 2 player with separate scoring

## 5 FUN WATER BLASTING GAMES

- + 42" LCD monitor
- + Fast simple setup
- + Low maintenance water recycling system



CHILDREN  
LOVE IT



EASY TO  
UNDERSTAND



FUN TO PLAY



Smart Card  
Capable



**Control Panel**

2 player Dual water guns that light up during game play



**Maintenance doors**

Maintenance doors on both sides of the clear plexi for easy access to the playfield



**Optional bench  
available**

## HOW TO PLAY

The games feature 5 exciting mini games available in single-player and 2-player modes. Using water guns, player shoots at the screen to select one of 5 mini games. When the game starts, player shoots at the targets

as quickly and as accurately as possible within the time limit to increase the score. Tickets are awarded at the end of each game.



Puffing Fireballs



Big Bad Wolf



Pirate Attack



Poppin' Bubbles



Ghost Buster

## SPECIFICATIONS

Rated Power Supply	Min. Power Consumption	Max. Power Consumption
AC 110V 50/60Hz	370W	900W
Game Dimensions	Packing Dimensions	Container Fitting
W43 3/4xD73 3/8xH90 (inch) W1112xD1863xH2270 (mm)	W46xD77xH87(inch) W1150xD1950xH2200(mm)	20' container: 6 units 40' container: 12 units
Game Weight	Shipping Weight	Smart Card Capability
320 kg/705lb	350kg/772lb	Yes

# TUBIN' TWIST

## TWIST YOUR WAY TO A **BIG WIN!**

- Striking multi-colored changing lights
- Attractive game play that will fill up your cashbox!
- 100% skill-based game with high odds of winning Giant Bonus!
- Easy linkable up to 3 units



CHILDREN  
LOVE IT



EASY TO  
UNDERSTAND

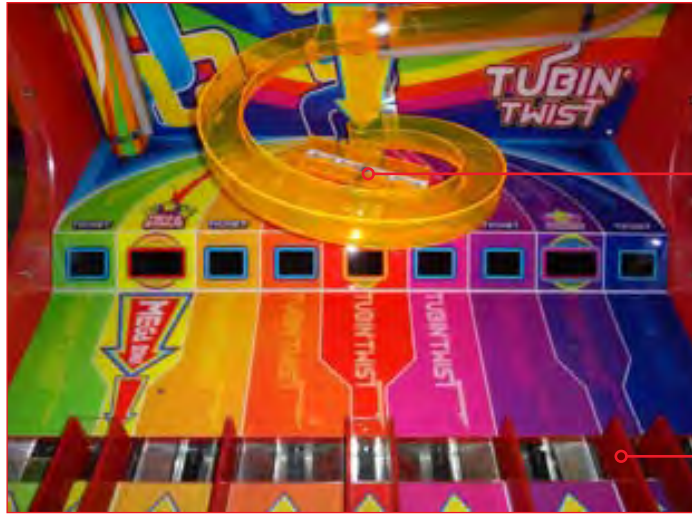


FUN TO PLAY



Smart Card  
Capable





spinner

9 winning slots

6 ticket slots

1 Bonus Ticket slot

1 Extra Ball slot

1 Mega Bonus slot

Time the drop, stop the spinner!  
Aim for the mega bonus to win tons of tickets!

## HOW TO PLAY

- Press the button to release ball at the top.
- Watch the ball fall through a series of tubes.
- Control the stop of the spinner by pressing the button.
- The ball drops onto the spinner then down into a numbered slot to win corresponding number of tickets!

## SPECIFICATIONS

Rated Power Supply	Min. Power Consumption	Max. Power Consumption
AC 110V 50/60Hz	130W	180W
Game Dimensions	Packing Dimensions	Container Fitting
W35 1/2xD38 3/4xH88 1/2 (inch) W903xD982xH2248 (mm)	W37 1/2xD42x H87 (inch) W950XD1050X2200 (mm)	20' container: 12 units 40' container: 24 units
Game Weight	Shipping Weight	Smart Card Capability
175kg/386lb	240kg/529lb	Yes



# WINNING MANIA!

MANY EXCITING FEATURES THAT ENCOURAGE REPEAT PLAY!

## FRUIT MANIA

- Skill-based excitement; rapid coin shooting action
- Many ways to win, plus bonus feature
- Simple game play, attractive winnings
- 32" LCD screen
- Small footprint



CHILDREN  
LOVE IT



EASY TO  
UNDERSTAND



FUN TO PLAY



Smart Card  
Capable

## WINNING FEATURES

## HOW TO PLAY

- Aim and shoot coins at the rotating fruits to drain their health bars. Fruits will turn into treasure boxes and fall onto the platform.
- Each time coins/boxes drop into the “Winning Zone”, you win tickets, when coins/boxes drop into the Prize Wheel Trigger, it activates the Prize Wheel, for a chance to win more tickets or receive special items.

Prize Wheel

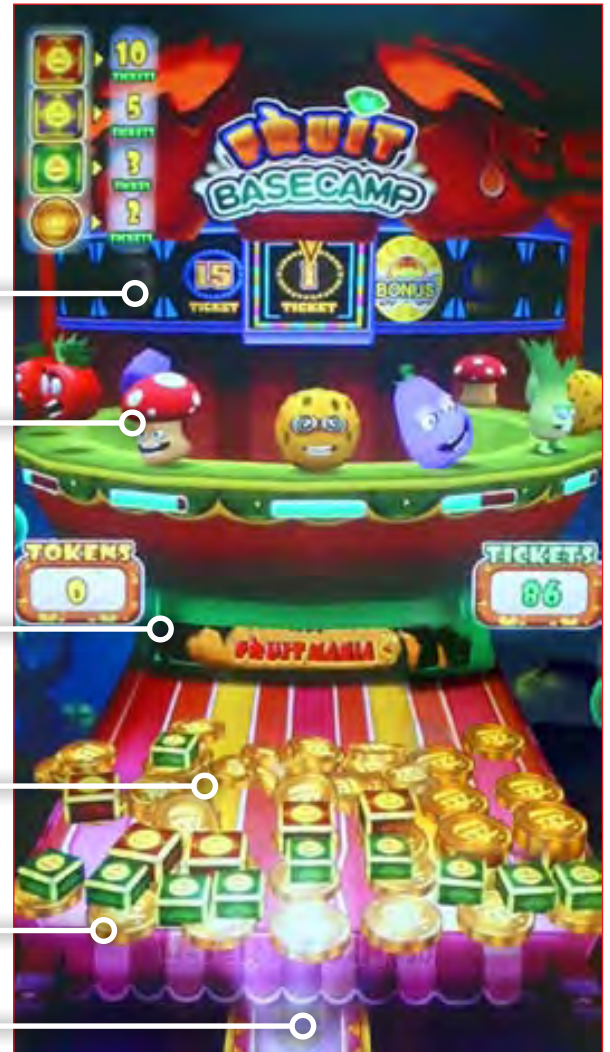
Hit fruits

Pusher

Treasures

Winning Zone

Prize Wheel Trigger



## SPECIFICATIONS

Rated Power Supply	Min. Power Consumption	Max. Power Consumption
AC110V 50/60Hz	200W	250W
Game Dimensions	Packing Dimensions	Container Fitting
D28 ¾ xW23 5/8 xH84 ¼ (inch) W600xD730xH2140 (mm)	W29 ½ xD33 ½ xH82 ¾ (inch) W750xD850xH2100 (mm)	20' container: 21 units 40' container: 42 units
Game Weight	Shipping Weight	Smart Card Capability
120kg/265lb	160kg/353lb	Yes





# WINNING TO THE EXTREME!

- Skill-based excitement
- Rapid coin shooting action, simple game play
- Many ways to win, attractive winning features
- Enhanced features include attractive lighting
- 47" LCD monitor
- Dual Ticket Dispensers
- 3-D cabinet features



CHILDREN  
LOVE IT



EASY TO  
UNDERSTAND



FUN TO PLAY



Smart Card  
Capable



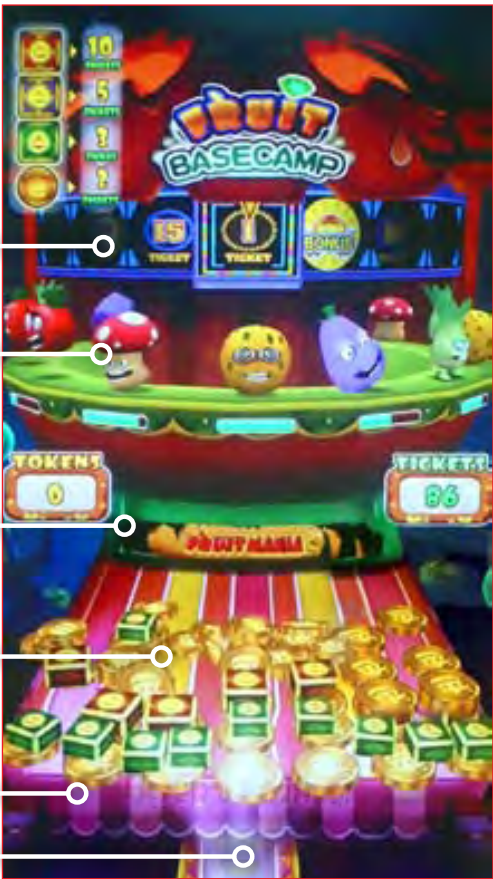
- Attractive light box signage on both sides
- 47" LCD monitor; vibrant colors, crisp graphics



- Dual ticket dispenser
- Moulded three dimensional Pumpkin character that lights up!

WINNING FEATURES

- Prize Wheel
- Hit fruits
- Pusher
- Treasures
- Winning Zone
- Prize Wheel Trigger



HOW TO PLAY

- Aim and shoot coins at the rotating fruits to drain their health bars. Fruits will turn into treasure boxes and fall onto the platform.
- Each time coins/boxes drop into the "Winning Zone", you win tickets, when coins/boxes drop into the Prize Wheel Trigger, it activates the Prize Wheel, for a chance to win more tickets or receive special items.

SPECIFICATIONS

Rated Power Supply	Min. Power Consumption	Max. Power Consumption
AC110V 50/60Hz	250W	500W
Game Dimensions	Packing Dimensions	Container Fitting
W41 1/4xD42 1/2xH105 (inch) W1047xD1080xH2667 (mm)	W53 1/4xD45 1/4xH90 1/2 (inch) D1350xW1150xH2300 (mm)	20' container: units 40' container: 18 units
Game Weight	Shipping Weight	Smart Card Capability
280kg/617lb	320kg/705lb	Yes



# READY, SET, WHACK!

FAMILY FRIENDLY GAME, IDEAL FOR YOUNGER CHILDREN  
SUITABLE FOR YOUNGER AGE GROUPS

- Simple and fun gameplay
- Low profile and durable cabinet
- Cute popping frog heads
- Suitable for younger age group
- Attractive multicolored LED lights
- Dual Speakers
- Retractable soft mallet



CHILDREN  
LOVE IT



EASY TO  
UNDERSTAND



FUN TO PLAY



Smart Card  
Capable





Beautiful multi-color changing lights



Individual hole flashes where the frog pops up



CHILDREN-FRIENDLY  
LOW PLAYFIELD



Mallet retracts when  
not in use

### HOW TO PLAY

Once the game starts, the frogs will randomly pop up from their holes. Whack the frogs back into their holes by hitting them directly on the head with the mallet to score. Hit as quickly and as many frogs

as possible before the time runs out. The higher the score the more tickets you win.

### SPECIFICATIONS

Rated Power Supply	Min. Power Consumption	Max. Power Consumption
AC110V 50/60Hz	140W	160W
Game Dimensions	Packing Dimensions	Container Fitting
D20 x W25 x H53 (inch) D500 x W630 x H1350 (mm)	D21 x W26 x H41 3/8 (inch) D530xW660xH1050 (mm)	20' container: 33 units 40' GP container: 63 units
Game Weight	Shipping Weight	Smart Card Capability
65kg /143lb	90kg/198lb	Yes

# DUCKY SPLASH

## Make a Big Splash !

Kids love water games!



- 1-2 player family game
- Adorable ducks & dino characters
- Low maintenance water recycling system
- Cheerful lights and music
- Quick return on investment
- Suitable for all indoor locations



CHILDREN  
LOVE IT



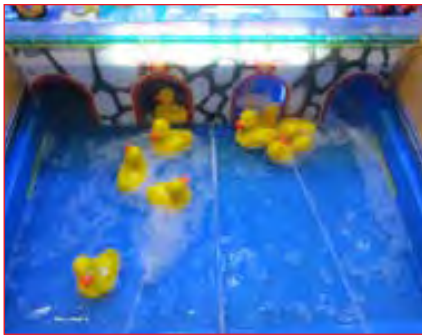
EASY TO  
UNDERSTAND



FUN TO PLAY



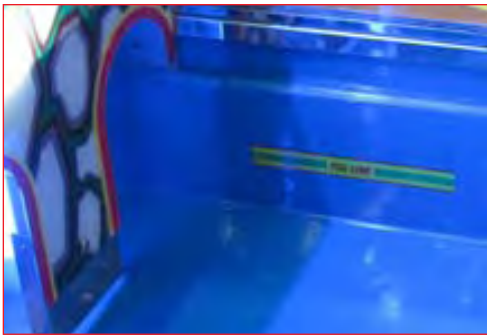
Smart Card  
Capable



Blast ducks through tunnels to win tickets



Safety barrier to prevent children from reaching into the playfield  
Dual water guns tilt up and down, side to side



Simple setup  
Just add water and start playing!  
Uses a pump and filtration system to keep water clean

## HOW TO PLAY

- The object of the game is to use the Dino water guns to shoot rubber ducks into the 2 tunnel entrances.
- Players must shoot as many ducks as possible into their own entrance before the time runs out. Each time a duck passes through the entrance, player's score increases
- Tickets will be awarded based on the final score
- Water guns will automatically turn on once coin is inserted and will stop once the time is up



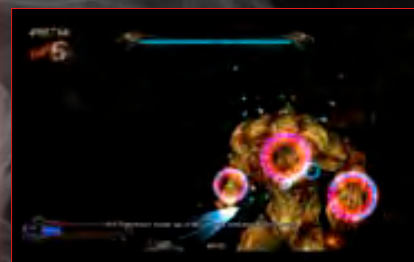
Maintenance doors  
Service doors on both sides of the clear plexi for easy access to the playfield

## SPECIFICATIONS

Rated Power Supply	Min. Power Consumption	Max. Power Consumption
AC 110V 50/60Hz	120W	6300W
Game Dimensions	Packing Dimensions	Container Fitting
W39 3/8 x D76 x H82 3/8 (inch) W1000 x D1930 x H2090 (mm)	D77xW42xH87 (inch) D2000xW1060xH2200 (mm)	20' container: 6 units 40' GP container: 12 units
Game Weight	Shipping Weight	Smart Card Capability
224kg /494lb	260kg / 573lb	Yes



**DLX**  
version



Drive through the underworld  
with the steering wheel. Shoot  
at the monsters and complete  
the 4 exciting stages!



**STD**  
version

# THE REAL FUN HAPPENS AFTER DARK...

INTENSE AND THRILLING SHOOTING ACTION ALL IN ONE!

- 1-2 player game
- Content appropriate for young teens and up
- Fully functioning steering wheel
- Guns with motion
- Motion platform included in DLX version
- Attractive and bright LED lights
- Spectacular graphics; great sound effects
- 47" monitor (STD version)
- 55" monitor (DLX version)





# Bike Rally



## BIKE TO WIN!

A HEALTHY, ACTIVE WAY TO HAVE FUN!

- Real cycling effects
- Safe platform
- 2 Different scenes
- Different characters to choose from
- Tickets awarded based on score

Family Arcade game  
win ticket!



CHILDREN  
LOVE IT



EASY TO  
UNDERSTAND



FUN TO PLAY



Smart Card  
Capable





Different Scenes and characters to choose from

Pedal and steer to control on-screen action!  
Collect items, avoid obstacles, and cross the finish line and win tickets.



Rotate handles left and right to steer while pedaling

Stationary bike; safe for children of all ages

Attractive components that light up and flash

Beautiful under cabinet LED lights



## HOW TO PLAY

Players pedal their way on a mounted bike to the finish line while trying to collect coins, diamonds, and tickets, at the same time avoiding the traps! Cross the finish line before the time runs out!

## SPECIFICATIONS

Rated Power Supply	Min. Power Consumption	Max. Power Consumption
AC 110V 50/60Hz	230W	260W
Game Dimensions	Packing Dimensions	Container Fitting
D75 3/4xW39 3/8xH75 1/4 (inch) D1925xW1000xH1910 mm	Bike: W41 3/4xD53 1/2xH44 1/8 (inch) Cabinet W29 1/8xD47 1/4xH87 (inch) Bike: 1360x1060x1120 (mm) Cabinet: 1200x740x2200 (mm)	20' container: 7 units 40' GP container: 16 units
Game Weight	Shipping Weight	Smart Card Capability
250kg/551lb		Yes



# BLAST OFF WITH ASTRO INVASION!

DOUBLE THE FUN, DOUBLE THE EARNINGS!

- 2-player simple ball tossing game, fun for all ages
- Multiple moving targets that light up
- Beautiful multi-colored changing led lights
- Newest addition to our "Family Series"
- 2 separate sides scoring



CHILDREN  
LOVE IT



EASY TO  
UNDERSTAND



FUN TO PLAY



Smart Card  
Capable





Multiple difficulty level targets

Spaceship targets with spinning needles for more excitement

Robots rotate left/right and move up/down

Aliens light up during game play!



1-2 player modes: Cooperate or play separately (operator adjustable)

## HOW TO PLAY

Throw as many balls as possible into the mouths of the robots or aliens before the time runs out!

The more you toss, the higher the score.  
Aim the balls at the spaceship at the back to win even more tickets!

## SPECIFICATIONS

Rated Power Supply	Min. Power Consumption	Max. Power Consumption
AC 110V, 50/60Hz	85W	275W
Game Dimensions	Packing Dimensions	Container Fitting
D75 7/8xW39 3/8xH82 1/8 (inch) D1930xW1000xH2085 (mm)	D78xW41 3/4xH82 3/4 (inch) D1980xW1060xH2100 (mm)	20' container: 6 units 40' container: 12 units
Game Weight	Shipping Weight	Smart Card Capability
142kg/313lb	180kg/397lb	Yes



# ✿ MINI EXPRESS ✿

## A SMOKING GOOD RIDE



- Safe and cool smoke effects!
- Push button whistle
- Interactive mini game
- Refillable fog juice for smoke effect
- Gel coated for durability
- Small foot print cabinet

**Gel-Coat  
Cabinet**



CHILDREN  
LOVE IT



EASY TO  
UNDERSTAND



FUN TO PLAY



**Smart Card  
Capable**



Interactive mini game

## HOW TO PLAY

Play the interactive mini game while you ride this adorable train and be amazed by the cool smoke effects! Gentle rocking motion, fun ride for children of all ages.

## SPECIFICATIONS

Rated Power Supply	Min. Power Consumption	Max. Power Consumption
AC110V 50/60Hz	25W	350W
Game Dimensions	Packing Dimensions	Container Fitting
W26 3/8xD40 1/4xH43 (inch) W670XD1020XH1090 (mm)	W27xD47xH50 (inch) W680XD1190XH1100 (mm)	20' container: 16 units 40' GP container: 34 units
Game Weight	Shipping Weight	Smart Card Capability
221kg/487lb		Yes

Press the button to hear the train and see the smoke effects during ride operation

Mini video game displayed on 7" monitor

Handles move left and right for interactive game play

Gentle rocking motion, safe, secure and fun



# TOTAL DRIFT

## PHOTO RIDE

A PICTURE PERFECT RIDE



- Takes snap shots of riders
- Customizable picture frames
- Laser printer
- Prints picture instantaneously
- Interactive ride with sound buttons
- Gentle rocking motion, safe, secure and fun



CHILDREN  
LOVE IT



EASY TO  
UNDERSTAND



FUN TO PLAY



Smart Card  
Capable





Camera takes snapshots during ride



Interactive ride with sound buttons

Pre-printed frames on photo paper (can be customized)\*



Pictures print out instantaneously after the ride



\*Contact your sales rep for more details

## HOW TO PLAY

Fasten seat belt, then insert coin(s) to start. The ride will start automatically. During the riding, look toward the camera and smile!

Press the buttons to hear different sounds. After the ride stops, the photo will be printed out.

## SPECIFICATIONS

Rated Power Supply	Min. Power Consumption	Max. Power Consumption
AC 110V, 50/60Hz	418W	600W
Game Dimensions	Packing Dimensions	Container Fitting
W35 1/2xD83 7/8xH53 1/8 (inch) W900xD2130xH1350 (mm)	D89 3/8xW39xH51 1/4 (inch) D2270xW990xH1300 (mm)	5 units in 20' 11 units in 40'
Game Weight	Shipping Weight	Smart Card Capability
180kg/397lb	230kg/507lb	Yes

# VEGGIE BLAST

## CUTE BLASTING FUN!

KIDS WILL ENJOY SHOOTING THESE VEGGIES!

- 1- player skilled-based video redemption
- Multiple exciting stages
- Cute vegetable characters and sounds
- Corn-shaped gun with force feedback action
- Multi-color LED lights and Marquee
- Hit veggies to score and win tickets



CHILDREN  
LOVE IT



EASY TO  
UNDERSTAND



FUN TO PLAY



Smart Card  
Capable



Cute and adorable characters; multiple background scenes.  
Shoot the veggies and avoid the bombs

## HOW TO PLAY

Using the gun, aim and shoot vegetables as they pop out from all over the screen, but be careful to avoid shooting Bombs! Accuracy and speed will fill the POWER bar quicker for a chance at the Lucky Wheel!

Play hidden mini games to win more tickets. Gun rotates left/right and tilts up/down; 2 buttons to control the shooting.

## SPECIFICATIONS

Rated Power Supply	Min. Power Consumption	Max. Power Consumption
AC110V 50/60Hz	200W	350W
Game Dimensions	Packing Dimensions	Container Fitting
W35 3/8XD59 7/8XH86 1/2 (inch) D1520 X W900 X H2198 (mm)	D45 1/4 X W37 3/8 X H74 3/4 (inch) D1150 X W950 X H1900 (mm)	20' container: 21 units 40' GP container: 42 units
Game Weight	Shipping Weight	Smart Card Capability
85kg/187lb	130kg/287lb	Yes





# KNOCK 'EM DOWN... THE WILD WEST STYLE!

EXCITING GAME THAT TESTS YOUR SPEED,  
ACCURACY, AND COWBOY SHOOTING SKILLS!

- Laser pointer gun with spectacular LED targets
- Exciting game based on skills
- Multiple stationary and moving targets
- Fast and accurate shots are rewarded
- Option to change form of payout (coupons/tickets)\*



\*Coupons payout needs printer



CHILDREN  
LOVE IT



EASY TO  
UNDERSTAND



FUN TO PLAY



Smart Card  
Capable



3 stationary targets that flip backwards when shot; moving targets at the back for more challenge



Laser Pointer gun,  
quick trigger action

Option to print coupons for  
instant prize redemption

Bright attractive LED lights; the game looks  
great in both bright/dark places



## HOW TO PLAY

Aim at the targets with the laser pointer gun. The 5 targets lights up, the more you shoot, the more points you win! Shoot targets consecutively without missing and double your points. Hit any targets

within the final 10 seconds and receive Double points. The game comes with 2 operator adjustable payout options: tickets or coupons.

## SPECIFICATIONS

Rated Power Supply	Min. Power Consumption	Max. Power Consumption
AC 110V, 50/60Hz	120W	200W
Game Dimensions	Packing Dimensions	Container Fitting
W33 X D74 3/4 X H82 1/4 (inch) W839 X D1897 X H2087 (mm)	D47 1/4xW37 3/8xH90 5/8 (inch) D1200xW950xH2300 (mm) Gun table: D27 5/8xW27 5/8xH39 3/8 (inch) D700xW700xH1000 (mm)	40' container: 15 units
Game Weight	Shipping Weight	Smart Card Capability
211kg/465lb		Yes



# CRAB CATCHER

**DON'T GO OVERBOARD!**  
TEST YOUR BALANCING SKILLS!

- Simple boat balancing game
- 100% Skill-based game encourages repeat play
- Incremental Jackpot
- Intense game with time limit
- Beautiful multi-color changing LED lights



**\*LIMITED SALES TERRITORIES.**

PLEASE CONTACT YOUR SALES REPRESENTATIVE FOR DETAILS



CHILDREN  
LOVE IT



EASY TO  
UNDERSTAND



FUN TO PLAY



Smart Card  
Capable





Simple button control to drop balls



Skill-based interactive mechanical playfield



Drop balls to balance the boat.  
The more balls in the boat, the closer to winning the jackpot

## HOW TO PLAY

Drop as many balls into the boat as you can without tipping the boat. The boat tilts left and right, the more balls you get in the boat, the more tickets you win! If a ball falls out of the boat, it's game over! Challenge your balancing skills while racing against time!

## SPECIFICATIONS

Rated Power Supply	Min. Power Consumption	Max. Power Consumption
AC 110V, 50/60Hz	130W	180W
Game Dimensions	Packing Dimensions	Container Fitting
W29 1/8xD42 1/8xH87 7/8 (inch) W740xD1070xH2232 (mm)	D31 1/8 x W44 1/2 xH80 3/8 (inch) D790 x W1130 x H2040 (mm)	20' container: 14 units 40' GP container: 30 units
Game Weight	Shipping Weight	Smart Card Capability
142kg/313lb	180kg/397lb	Yes